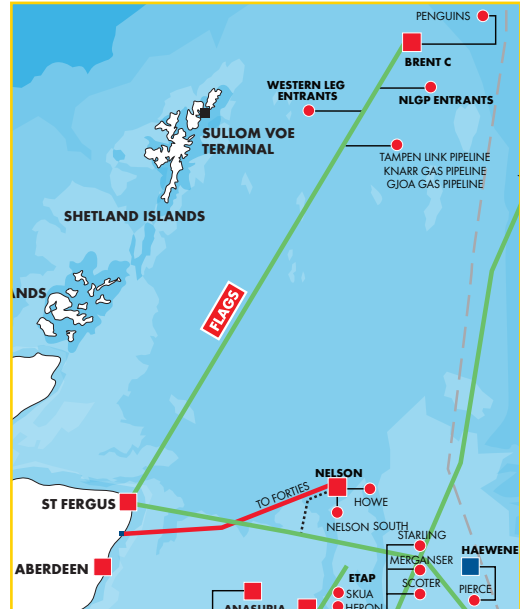




# FLAGS PIPELINE



**ST FERGUS**



## FLAGS PIPELINE

The FLAGS pipeline runs from the Brent platforms to the St Fergus Gas Terminal. Please note that the Western Leg Pipeline also leads into the FLAGS pipeline system, however ullage stated below relates to the FLAGS pipeline only, for further information please see appropriate contact details below.

### KEY FACTS

Sector	Northern North Sea
Commissioned	1982
Diameter	36 inch diameter
Hydrocarbons Carried	Gas
Export Method	The Far north Liquids and Associated Gas System (FLAGS) pipeline runs from the Brent platforms to the St Fergus Gas Terminal
Operated / Non Operated	Operated

## INFRASTRUCTURE INFORMATION

Entry Specification	<p>Shipper Gas shall be technically free from objectionable odours and dust or other matters (whether in a solid, liquid or gaseous state or other physical state), waxes, gums, gum forming constituent which might cause injury to or interference with the operation of the lines, meters, regulators or other appliances through which it flows.</p> <p>CO2: 1.6 %vol max  H2S: 2.5 ppmv max  Total Sulphur: 15 ppmv (as H2S) max  Water: 35 ppmv max  Cricondenbar: 105 bara max  Oxygen: 10 ppm max  Mercury: 0.01 µg/m3 max  C3+ : 5.5% mol min  Specs on several other trace contaminants</p>
Exit Specification	Not applicable

## HIGH LEVEL CAPACITY INFORMATION

The basic capacity information is portrayed by colour coded 'traffic lights' that reflect thresholds of availability over the next 5 years

Available Capacities



>25%



5% to 25%



<5%



Unknown

Description	Capacity	Ullage as % of system capacity					Comment
		2025	2026	2027	2028	2029	
Gas capacity	33 million sm <sup>3</sup> /d wet gas						Due to the integrated nature of the SEGAL System, this capacity information needs to be read in conjunction with that of the St Fergus Gas Terminal and the FNGL Plant.

## CONTACT INFORMATION

Subject to the availability of relevant capacity, each of Shell and Esso is capable of independently providing transportation and processing services using its own proportionate share of available capacity in the Segal System ("Divided Rights"). Please contact either the Shell or Esso representative for further information:

Shell For further enquiries regarding the above please contact  
**ABE-Notices@shell.com**

Esso For further enquiries regarding the above please contact Innes Ferguson  
**innes.j.ferguson@exxonmobil.com**

Last update: January 2025

Disclaimer: All the above information is provided by Shell U.K. Limited as the Segal System operator (for itself and on behalf of the Segal System Owners, Shell U.K. Limited (Shell) and Esso Exploration and Production UK Limited (Esso));

- In good faith and without any liability

- Without warranty, implied or express to its accuracy or relevance of use to any other party

- That in any agreement or arrangement with Shell U.K. Limited its use shall be "Subject to Contract"

Shell U.K. Limited reserves the right to update and change the data at any time